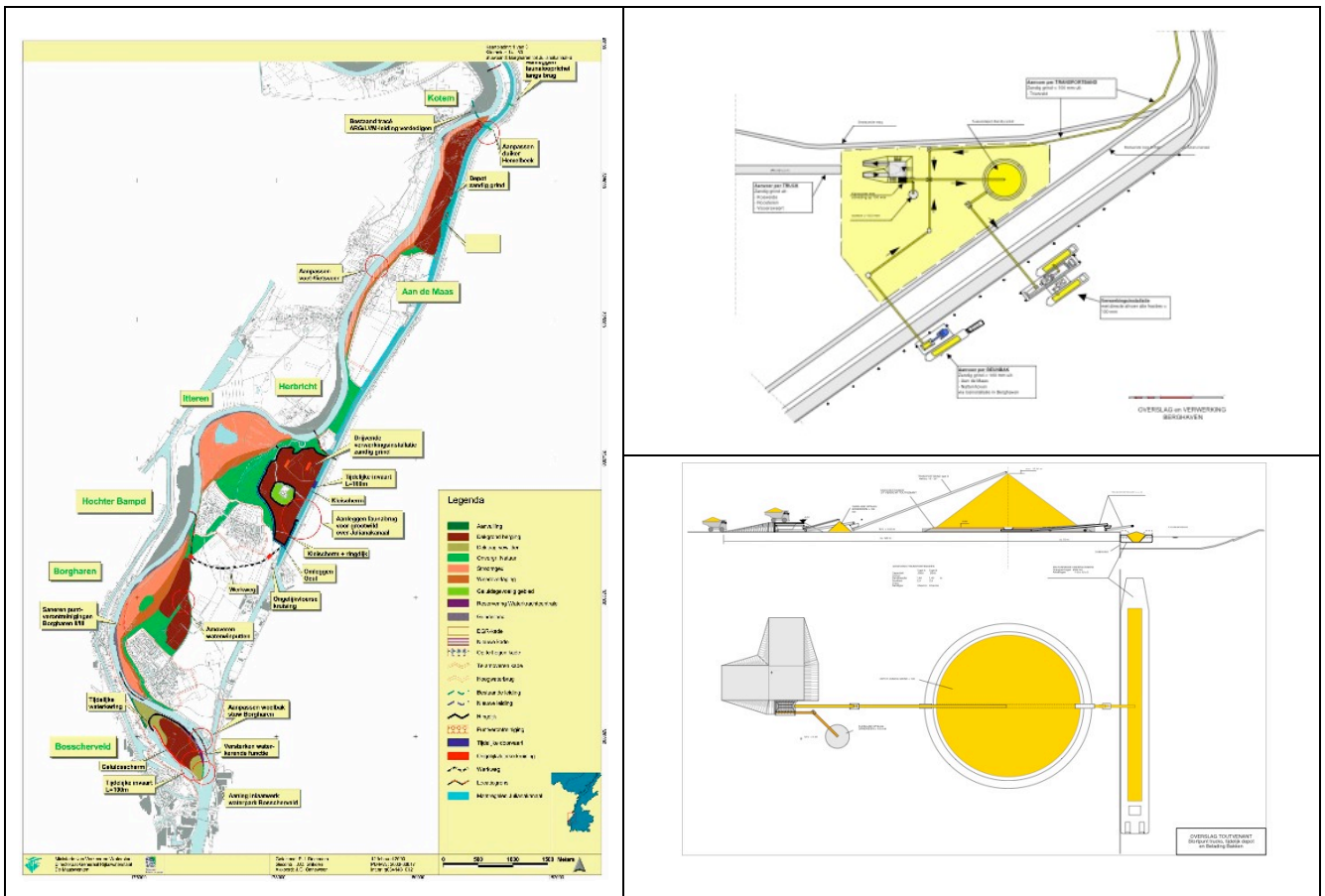


# Dredging Advise to Rijkswaterstaat for Project "De Maaswerken"



The Grensmaas project, in southern part of the Netherlands on the border with Belgium, is a major 40 km long infrastructure project aiming at providing safety and protection against flooding by the River Maas (Meuse). It is part of the Maaswerken project. The project is a joint effort between the Province Council of Limburg, the Ministry of Transport, Public Works and Water Management and the Ministry of Agriculture, Nature and Food Quality.

The present plans call for local deepening and widening of the riverbed, lowering of adjacent riverbanks and the excavation of high water gullies to improve flow at high river discharges. The topsoil and sand-gravel mixture will be dry excavated separately. Topsoil will be transported to large nearby depots excavated in advance with additional extraction of sand and gravel. The sand-gravel mixture will be transported to 3 or 4 centrally located processing plants to be sold to the concrete and building industry all over the Netherlands. The plans are integrated in a nature developing scheme aiming at 1250 ha of river park with a free meandering river and biological diversity. The entire project will be financed with the marketing of the 53 million ton of aggregates.

DEMAs dredging consultants bv, via D.O.O.R. bv, assisted and advised a special task group within the project organisation. During the design and planning stages environmentally acceptable work methods including quantity, production and cost calculations were developed and evaluated.

## Client

D.O.O.R. bv  
Rijkswaterstaat, Directie  
Limburg

## Location

The Netherlands, Maastricht

## Year

1999 - 2001

## Services

- dredging advise
- planning advise

**demas**  
dredging consultants bv

Herbarenerf 7  
2743 HA Waddinxveen  
The Netherlands  
Tel +31 182 546798  
Fax +31 182 546802  
E-mail demasnl@demas.nl  
Web www.demas.nl